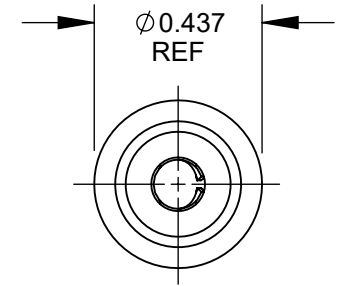
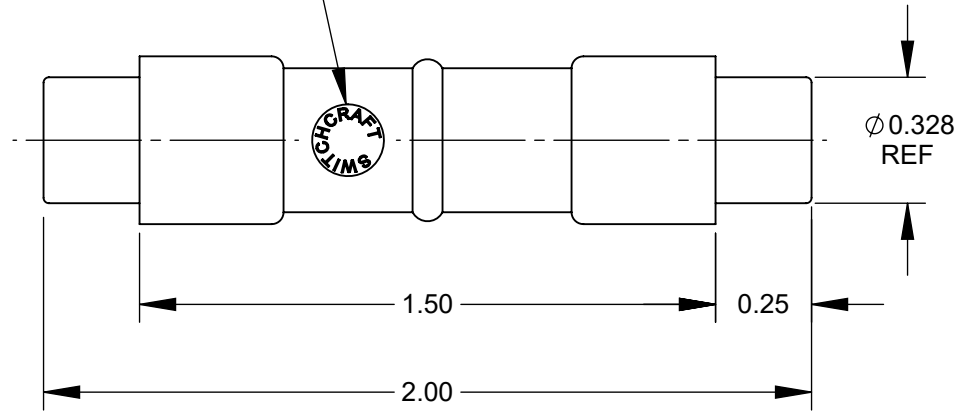


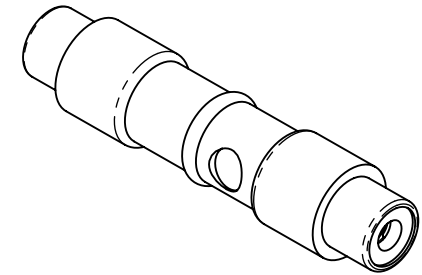
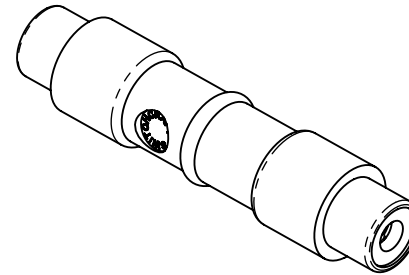
FOR $\varnothing 0.125 \times 0.56$ LONG
PHONO PLUG BOTH ENDS

SWITCHCRAFT LOGO
ONE SIDE ONLY



NOTES:

- MATERIALS:**
METAL TUBE - STEEL, NICKEL PLATED
INSULATORS - MYLAR, PHENOLIC & THERMOPLASTIC
RECEPTACLE - COPPER ALLOY, MATTE TIN
OVERMOLD - THERMOPLASTIC, GRAY
- THIS PRODUCT IS RoHS COMPLIANT.



CUSTOMER DRAWING

					<div>UNLESS OTHERWISE SPECIFIED</div> <div>1. ALL DIMENSIONS IN INCHES</div> <div>- TWO PLACE DECIMALS ±0.02</div> <div>- THREE PLACE DECIMALS ±0.005</div>	THIS DRAWING DESCRIBES A DESIGN CONSIDERED PROPRIETARY IN NATURE, DEVELOPED AND MANUFACTURED BY SWITCHCRAFT INC. AND IS RELEASED ON A CONFIDENTIAL BASIS FOR IDENTIFICATION PURPOSES ONLY.					
						SIZE	WIDTH	MULT	LBS/M	TEMPER	
						FINISH			MATERIAL		
						SPEC No.			SPEC No.		
						FIRST USED ON		SCALE 2:1		<div>Switchcraft®</div>	
B	25504	12-8-06	TO	TJK		DATE DRAWN	BY	CHKD	APVD		
A	26086	7-7-06	TO	TJK	06-23-11	JEB	JEB	TJK			
							06-23-11	11-10-15	SHEET 1 OF 1		
REV	ECO NUMBER	DATE	BY	APVD	NAME				PART No.	REV	
REVISIONS					DO NOT SCALE DRAWING		PHONO JAX MOLDED COUPLER, RoHS			349AX	B

SolidWorks CAD File

