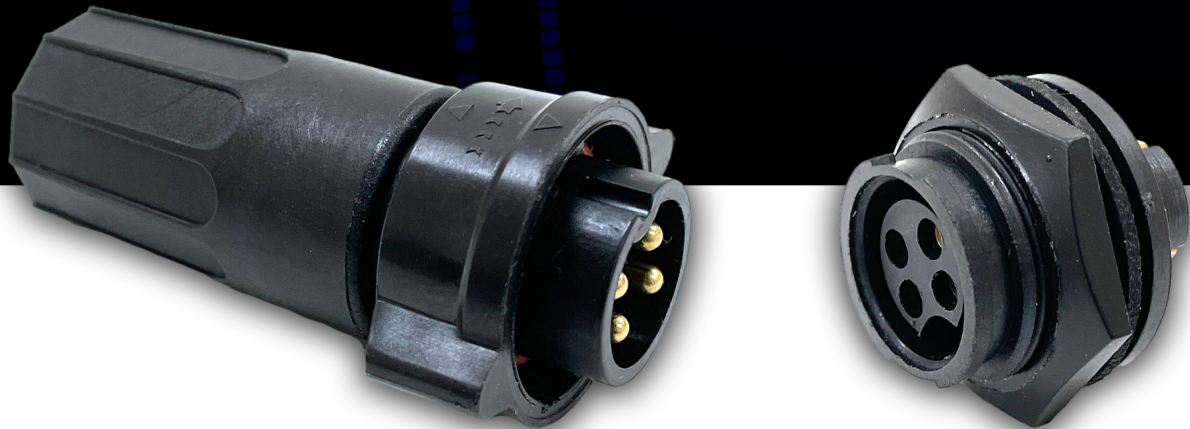


NEW PRODUCT BULLETIN 689

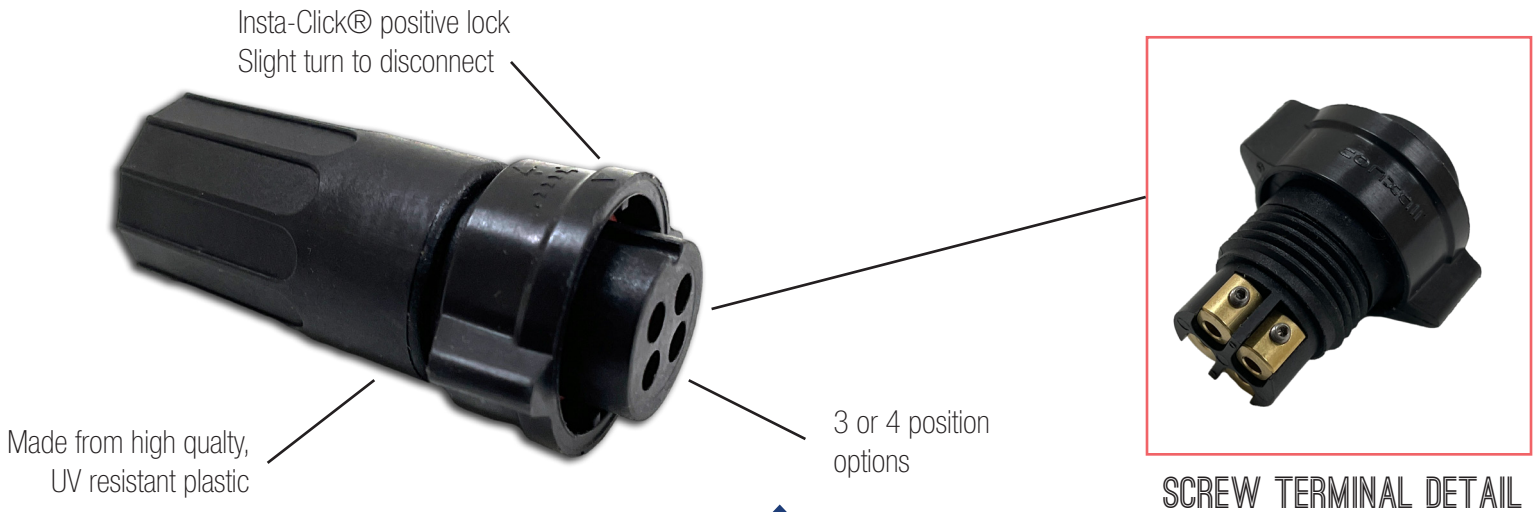
INSTA-CLICK[®]
MULTI-CON-X[®] WITH
SCREW TERMINALS



Switchcraft[®]
CONXALL[®]

HARSH ENVIRONMENT CONNECTIVITY SOLUTIONS

601 EAST WILDWOOD, VILLA PARK, IL 60181 | PHONE: 630-834-7504 | SALES@CONXALL.COM



NEW PRODUCT

The Multi-Con-X® from Conxall® has set the industry standard for sealed circular plastic connectors for nearly 50 years, and this new extension makes field termination easier than ever. Simply insert the conductors and tighten the preinstalled hex screw. No soldering or crimp tools are required. The Multi-Con-X® with screw terminals also incorporates the latest Insta-Click® design with automatic positive lock and an IP68 waterproof rating.

IP68
WATERPROOF
SEALED

The Multi-Con-X® with screw terminals has a standard IP68 seal rating, along with UL F1 rated UV resistance.

13 A
CURRENT
RATING

Large size #14 contacts are ideal for power applications, providing up to 13 A of power when using 14awg wire.


CONXALL
QUALITY

Made in USA to the high standards that have made Conxall the leading name in harsh environment connectors.

SPECIFICATIONS

Lifecycles: 300 cycles min.
Contact Size: #14 contacts
Wire Size: 14, 16, or 18awg
Voltage: 600V AC/DC
Temperature: -40°C to 115°C
Contacts: Gold plated copper alloy
See drawing for additional specs.

Ordering Code

